

OIL PAN BLOCK INSTALL GUIDE



Description: This guide includes the components, tools, and steps necessary to properly install the Sikky Pan Mounted Remote Oil Filter Adapter Block to your Sikky Oil Pan.

Components:

- (1) Oil Pan
- (1) Oil Pan Block
- (3) 1/4-20 x 5/8" Button Head Cap Screws
- (2) O-Rings
- (3) Copper Sealing Washers

Tools Required (Not Included):

- (1) 5/32 Allen Wrench

PROCEDURE INSTRUCTIONS

1. Remove the required components from the packaging and obtain the tools required for this job.

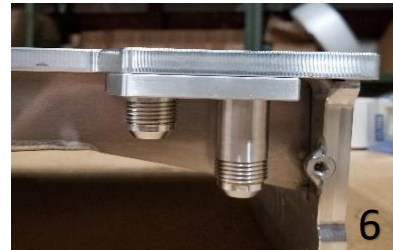
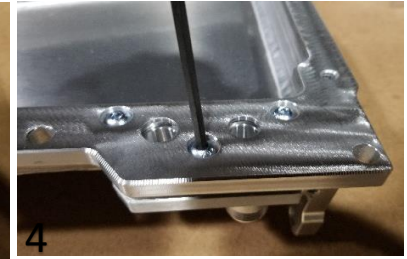
2. Place the 3 copper washers in the mounting holes as shown.

3. Install the 2 O-Rings on the oil pan block nipples. Ensure they are all the way on.

4. Place the block onto the Oil Pan, aligning the mounting holes and properly orienting the block. Be careful not to pinch the O-rings during install.

5. Add a small dot of RTV sealant onto the threads of each bolt, then insert the 3 1/4-20 bolts into the mounting holes. Tighten the bolts down to 80in-lbs (9N-m) with the allen wrench.

6. Ensure the block is mounted flush with the oil pan flange. (Reference Picture)



Tips:

- Do not overtighten the bolts 80in-lbs (9N-m) torque spec
- Double check the oil line routing by referencing the In/Out engravings on the oil pan block.

