

Congratulations on the purchase of your RCF Stainless Steel Headers and thank you for choosing Sikky Manufacturing. This installation manual is intended to guide you through the removal of the factory exhaust manifold and the installation of the Sikky stainless steel headers.



Note: We highly recommend a professional installation for this product. Check out our dealer list on our site to find a professional installer near your location.

Ideally this install should be performed on a car lift and this instructional guide is based on the methods that are best suited when using a lift.

** Headers are for off road use only **



Parts List		
Part Name	Quantity	Notes
RCF Driver-side Header	1	1 7/8" – 3" Stainless Steel
RCF Passenger-side Header	1	1 7/8" – 3" Stainless Steel
DS02A	1	Custom Dipstick Tube
Gasket09	2	RCF Header Collector Gasket
ECM1	1	RCF Header Electronic Control Module
O ₂ extension harness	2	O ₂ extension harness

- 1) Remove center, passenger, and driver side engine cover.



pictured.

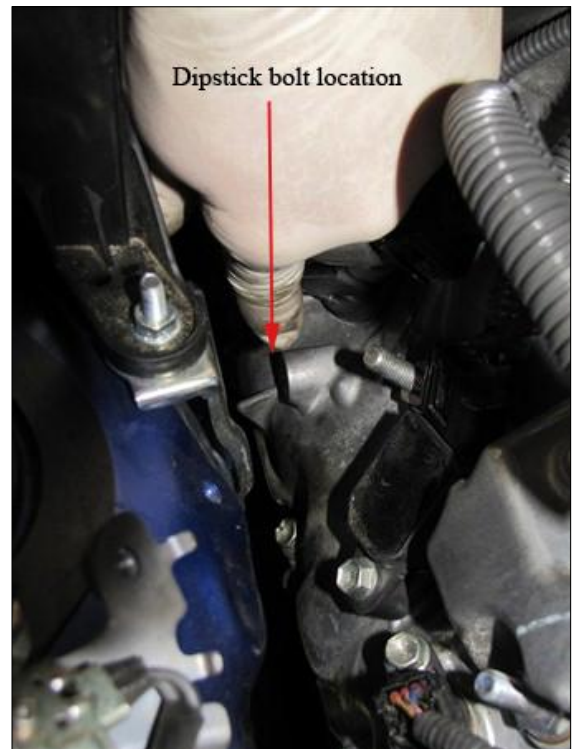
- 2) Remove air box cover and unplug mass air sensor from cover. Now you will be able to remove the air box. Disconnect MAF connector & harness clip located on the air-box. Remove clamp from intake tube to air-box. Remove air-box cover & filter.



- 3) Disconnect VAC hose from filter housing.

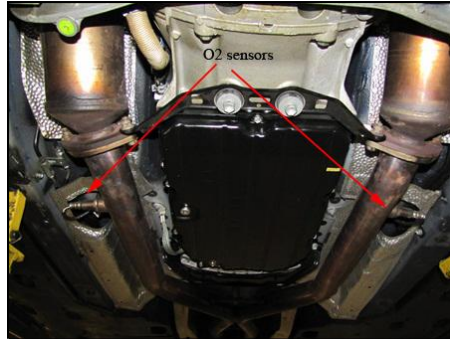


- 5) Remove bolts that fasten the fuse-box to the car.
 - a. Remove the clip displayed in the following picture.
 - b. Remove fuse box mounting bracket.
 - c. Once all fuse box bolts are removed, pull up on the fuse-box to allow for more room to access the dipstick tube bolt.



- 6) Remove 10mm bolt from passenger side valve cover that retains dipstick.

- a. Pull out the dipstick tube - *Note: If the car is overfilled with oil, the excess oil may spill from the dipstick tube port upon removal.*



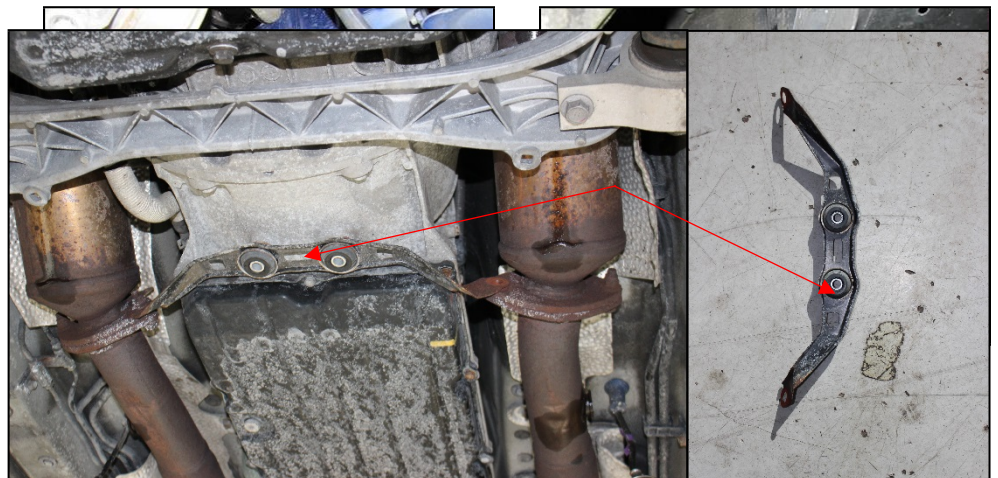
- 9) Remove secondary O2 sensors from exhaust pipe (you do not need to unplug) unscrew sensors and leave them hanging. *Be careful not to damage wires or sensors.*

- 7) Make sure steering wheel is straight and locked
Lift and support car.

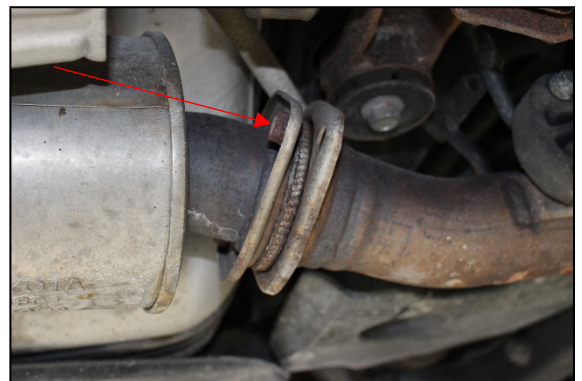
Remove engine and transmission splash guards.



- 8) Remove both sway bar splash guards – both sides are secured with a singular bolt and clip. *Take care to avoid breaking when removing said clips.*



- 11) Remove these two rear brackets.
- Partially unfasten the rearward plastic covers. *There are three plastic screws on one side two on the opposing side.* This will permit room to access the bolts without removing the entire shield.

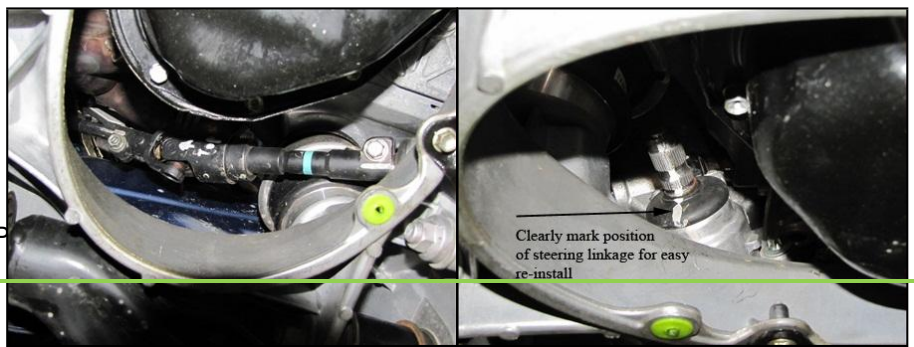
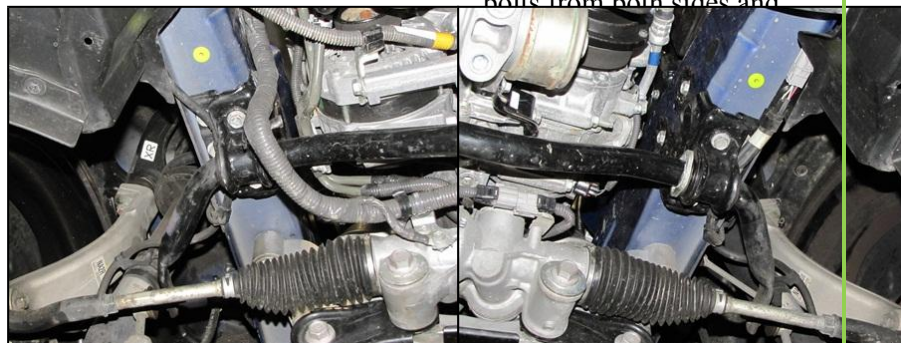


12) Remove remaining front



14) Remove center section of exhaust X-Pipe.

15) Remove sway bar bracket
bolts from both sides and



the connection point between the joint and steering rack.

This step will ensure your alignment when reassembling the vehicle. Although we do recommend having a front end alignment after the install.

- 17) Remove steering shaft and remove the bolts from either end of steering U-joint. Ensure that the marks are clear. You may want to extend the marks when disassembled to allow for the reassembly process to be uncomplicated while also retaining proper alignment. *Note which side of the joint is the top for they are not alike.*



- 18) Place the block of wood on top of the stand. Lift the stand until the wood is putting pressure on the crank pulley and timing cover to support the weight of the engine.



Note:

You will need a small block of wood (preferably a 2x4 about 6" long.) This wood will support and protect your engine. Very important to not use steel jack stands or something may damage the engine during the install.



RCF Stainless Steel Headers // Part# HDR-004

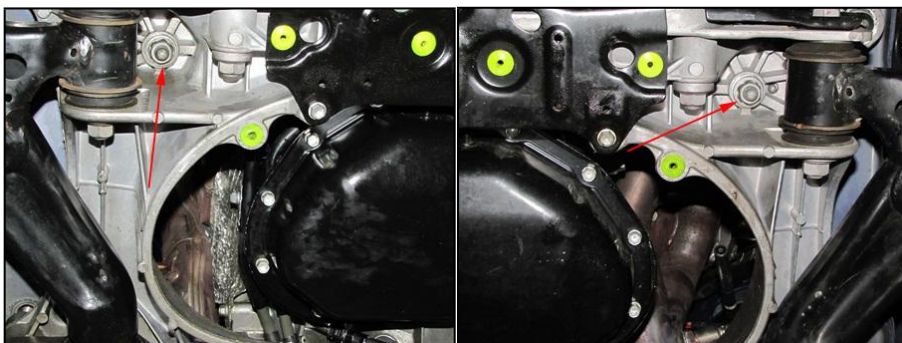
Make sure wood is straight, this will support engine during header install.

Note:

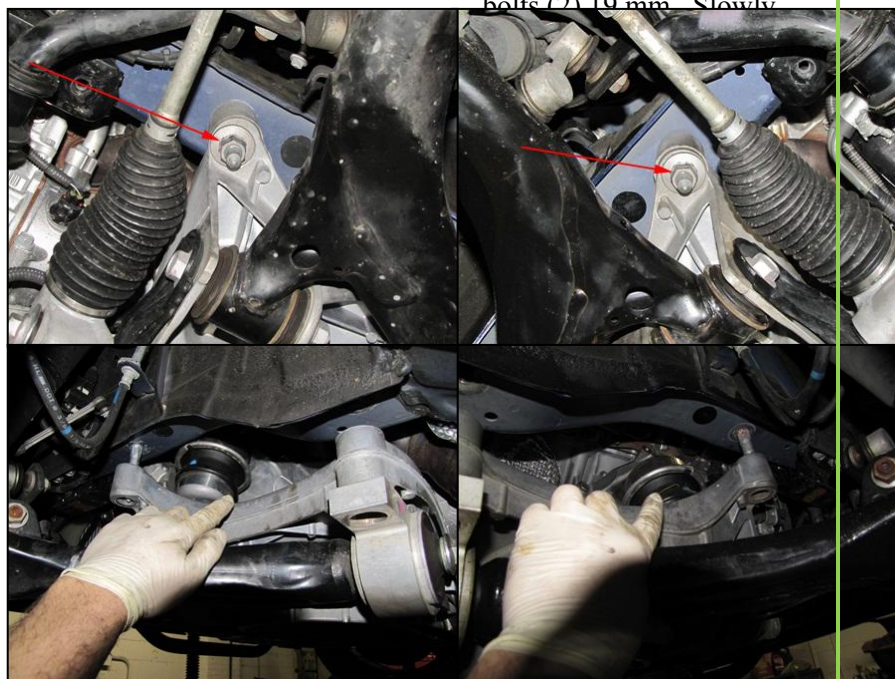
DO NOT LIFT ON OIL COOLER ENGINE IS NOT LIFTED, ONLY SUPPORTED.

Make sure to be supporting the subframe with stand or trans. Jack prior to removing bolts.

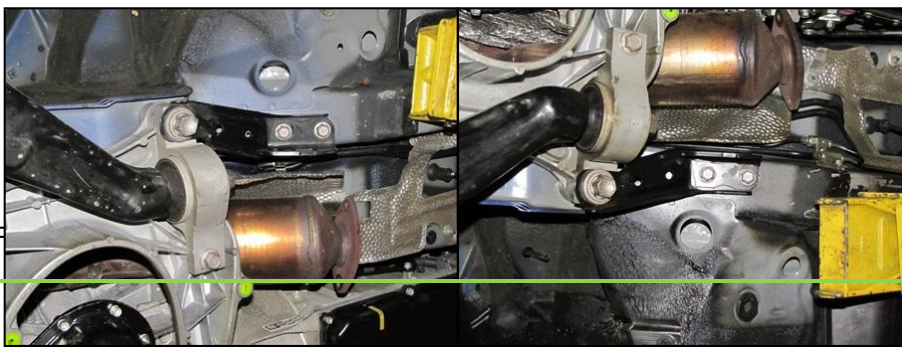
- 19) Remove both nuts on the bottom end of the engine mount bushings
17 mm.

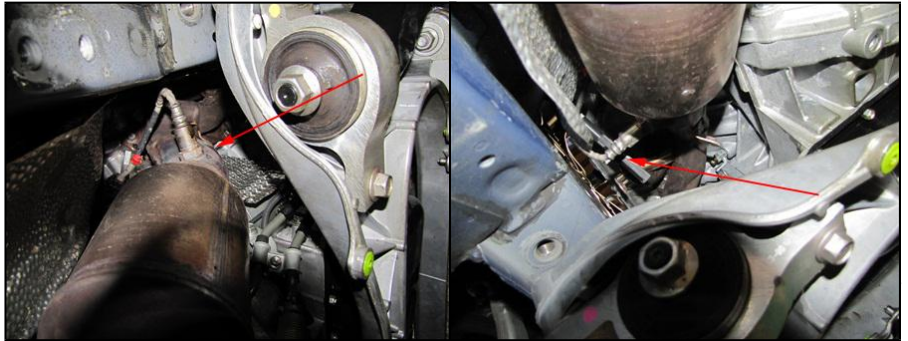


- 21) Remove front sub-frame bolts (2) 19 mm. Slowly

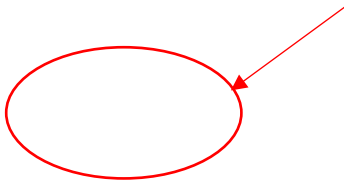


- 20) Remove tow hooks at rear of sub-frame.
(2) 14 mm
(1) 7/8" (mark right and left sides)

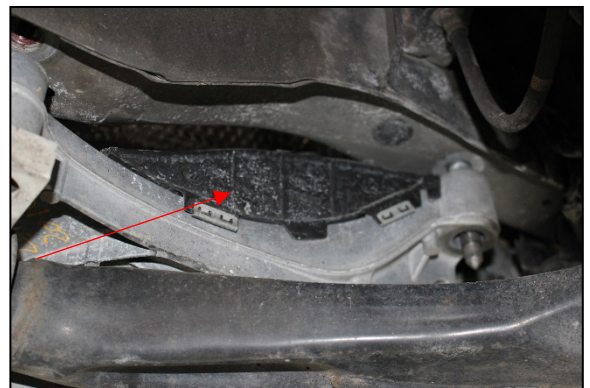




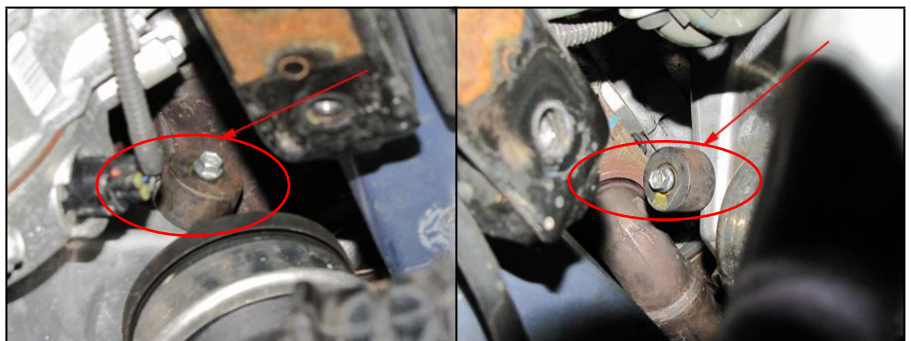
It is very common for these sensors to be seized into the factory exhaust manifolds. If the sensor threads are damaged during removal either repair the threads or replace the sensor. DO NOT reuse or you will damage the O₂ bung threads on the new headers.



- 22) Remove splash shields between sub-frame and frame rails on both sides

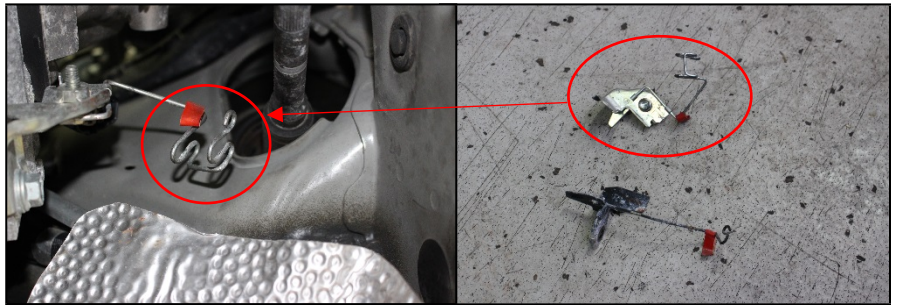


- 23) Remove dampers from motor mounts on both sides secured by a single 10mm bolt.
(will be reused)



- 25) Remove heat shields from the manifolds - they are flexible and will need to be flexed to get them out. There are 3 bolts on each side, make sure you remove them before pulling on the shields.

- 26) Remove small wire O2 plug hangers from both sides
WILL NOT BE REUSED

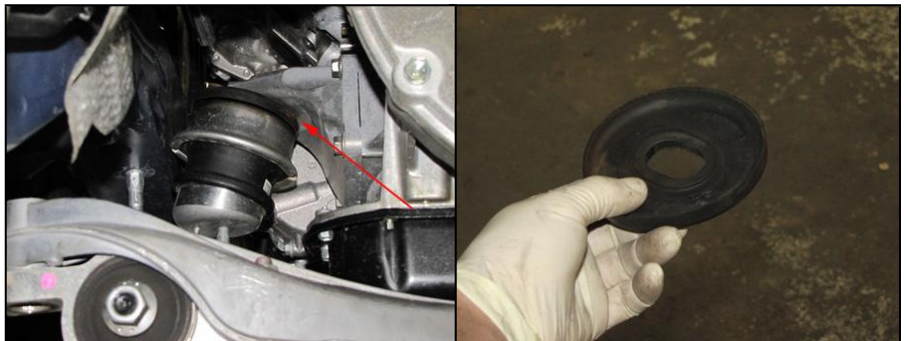


- 27) Remove eight nuts from each manifold. Remove stock exhaust manifolds. You may need to slightly move engine side to side and pull down on sub frame to ease removal do not raise or lower engine or damage to vehicle may occur.

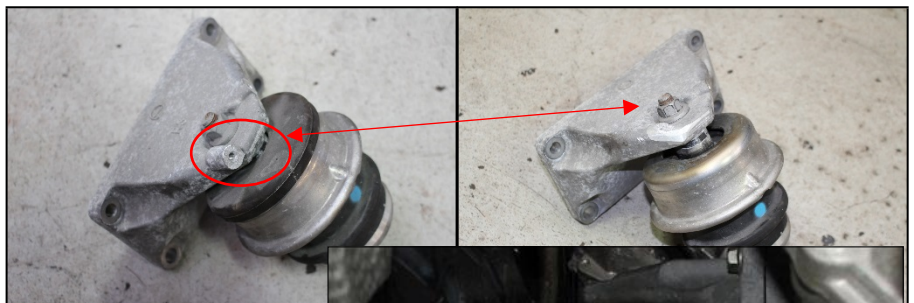
- 28) Remove top nut on drivers side engine mount to mount bracket. Then Pry down on the front sub-frame to remove the driver's side engine mount. Remove the rubber on the mount and reinstall mount cover and nut.

Note:

Moving the engine excessively can break the radiator as the upper rad hose is very short. Keep in mind the wiring harness only has so much flex as well.



- 29) Remove passenger side engine mount and bracket
Separate engine mount and bracket
Remove rubber from engine mount
Cut / grind the displayed bolt hole on the engine mount bracket until it is smooth - this will allow for the clearance needed to install the new headers



- 30) Reinstall mount on bracket, then reinstall engine mount assembly to engine



- 31) Install O2 sensor extension harness' provided
- Use zip ties to hold it in place against the transmission
 - Tie them up as high as you can to get maximum distance from the header once installed

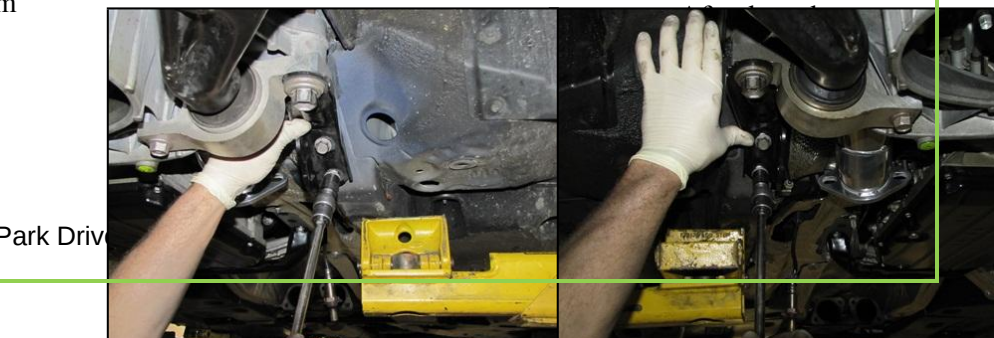
Note: Ensure original exhaust manifold gaskets are in good condition and are still in place on the mounting studs, if not replace them with OEM parts.

- 32) Install one header at a time:
- position the passenger side header first. You will need to pry down on the sub-frame to get the header past the engine mount and sub-frame.
 - Once the header is close carefully pry engine towards the driver side to situate the header onto the factory studs. Start the original eight nuts HOWEVER make sure to leave them loose.
 - Install driver side header at this time (*procedure is similar to passenger side with some slight variance being that the engine must be pried towards the passenger side*).
 - Once both headers are in position tighten all sixteen of the original nuts.

Note: Some of the nuts are difficult to access you will need a combination of wrenches, swivel sockets and a variety of extensions.

Be very careful when prying engine, move as little as required or damage surrounding components may occur.

- 33) Double check that all of the header nuts are tight. Check headers for clearance on shields and in general
- Reinstall sub-frame to frame splash shields.
 - With engine still loose reinstall front O₂ sensors
And connect to the O₂ extension harness, double check that wiring is as far from headers as possible



engine mounts to sub-frame and tighten.

- *Lower and tighten motor after sub-frame has been tightened.*



36) Install steering linkage. Be very careful to align your marks and tighten factory fasteners.

37) Install sway bar brackets and original bolts.

- 38) Install X-Pipe and brace from trans to header flanges, using original hardware and with supplied header to X-pipe gaskets.



Installing the dipstick

- 39) If you did not unplug rear O2 sensors you will need to wind them up counter clockwise prior to install so that when you thread them in the wires are not twisted after tightening them down.



in the engine and the mounting tab on the valve cover.

- 4) Verify that the bottom of the dipstick is firmly in place in the engine.

Notes:

- Be very careful threading the dipstick bolt in, the threads are very easy to strip / cross thread*
- Make sure the dipstick is rotated to provide as much clearance as possible on the headers while you tighten it / you may find that the dipstick tube is extremely close and slight contact with the header tube is okay.*
- Check one final time to make sure the dipstick is fully seated in the engine.*

- 5) Place factory dipstick into the Sikky dipstick tube

Final steps

- 1) Reinstall ground strap, VAC hose, and intake cover and air box and fuse box bracket along with the mounting bolts.
 - a. Leave all plastics covers off for now
- 2) Plug mass air flow sensor back in & clip harness on air box.
- 3) Check over all bolts and plugs to make sure they are tightened and plugged in
- 4) **Install microprocessor (additional guide can be found at the end of this document)**
- 5) Start engine, check for leaks
 - b. If leaks are found, check exhaust gaskets, depending on exhaust type, gaskets may have to be shifted around
 - c. Gaskets provided with Sikky RCF headers were designed to fit in the groove of a factory



exhaust system. Due to the fact that some aftermarket exhaust manufacturers are using flanges with smaller grooves than OEM you will need to split the difference with the gasket so it is centered on the opening. Take your time on this step because in improperly installed gasket will result in a leak.

- 6) Reinstall all plastic guards
 - *Sway bar splash shields*
 - *Trans & engine lower cover*
 - *Upper engine cover and both side covers*

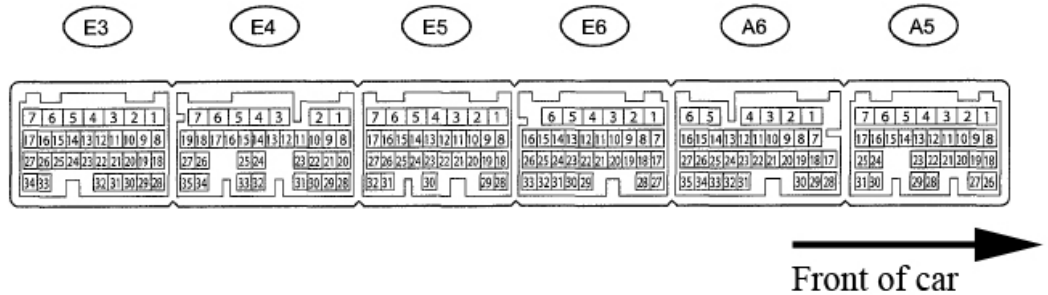
HAVE FUN!

Micro Processor installation

1. Remove driver side plastic engine cover
2. Remove (3) 10mm bolts and remove ECU cover

On Connector A6

Pin 26 – Red wire
 Pin 27 – Black wire
 Pin 5 – White wire w/
 Black stripe
 Pin 1 – Grey wire w/
 Red stripe



3. On A6
 - connector, trim wire loom to access the wires coming out of the connector.
 1. Should look like figure 2 when finished
4. Cut the black wire and the red wire going to Pin 26 and Pin 27 about 2" inches from the connector
5. Both Black and Red wires, coming out of the ECU, need to be soldered to yellow wire of micro processor
 1. Harness side of Black and red wires will not be used.
 - Tape up each wire carefully
6. Red Wire from Micro Processor needs to be T'd into the grey wire w/ red stripe at Pin 1 on the A6 connector
7. Black wire from Micro Processor needs to be T'd into the white wire w/ black stripe at Pin 5 on the A6 connector
 1. For steps 6&7. Wire must be spliced in. Do not cut factory wire. Remove wire insulation, solder to wire, and tape up.
8. Double check all connections were made properly, and all bare wires are taped or heat shrunk.
9. Tuck processor off to the side of the ECU and re install cover, installation complete.

