

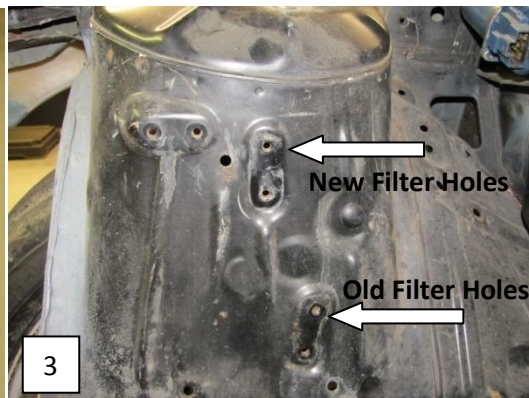
Sikky Fuel Filter Kit Install

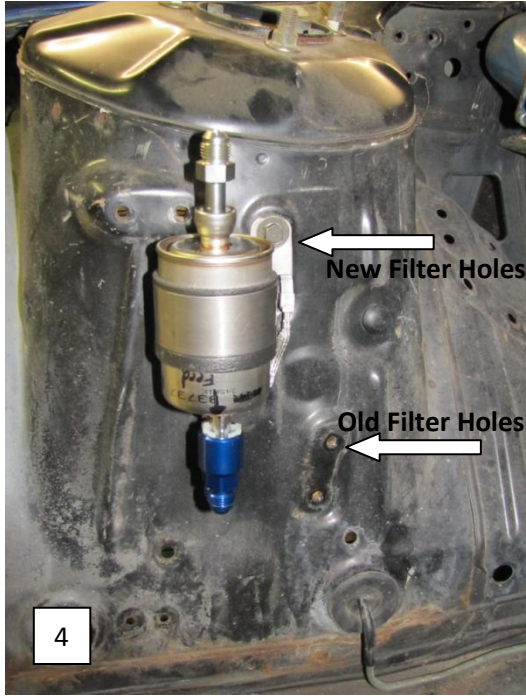
FFK1- Short Style

Step 1- Remove the factory fuel filter. Keep the bolts to reuse.



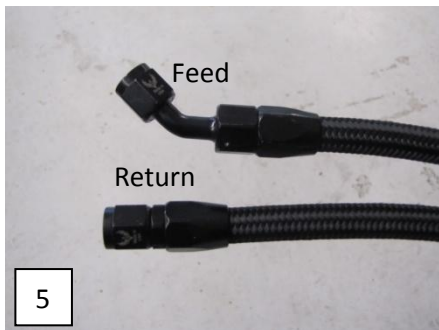
Step 2- Take supplied fuel filter with the original fuel filter bolts and reinstall. Use the upper hole location, not the same holes where the factory one was installed (Fig 2 &3).





The center line on the fuel filter is the return and the outer line is the feed.

Step 3- Loosely start the fittings onto the fuel filter. The hose with a 45degree fitting is the feed and the hose with a strait fitting is the return. Feed to feed, return to return!



Step 4- Clamp the supplied lines onto the existing factory lines.



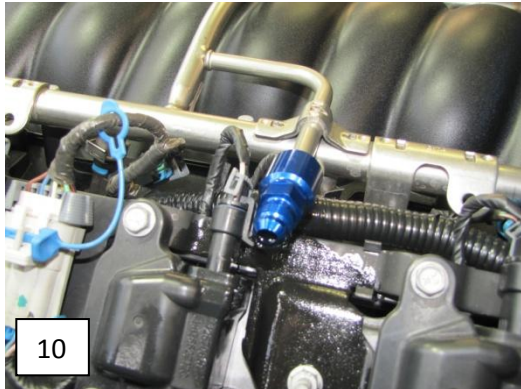
Step 5- Now tighten the fittings to the fuel filter. Do not over tighten AN fittings, they can be damaged very easily.



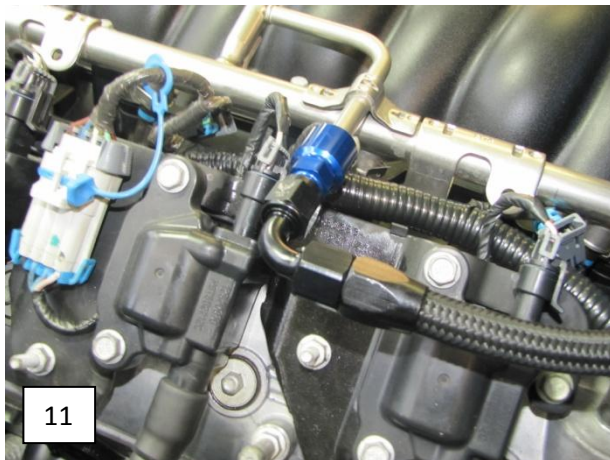
Step 6- Install the fuel rail feed hose to the fuel filter.



Step 7- Install the supplied clip on fitting onto the fuel rail.



Step 8- Install the 90degree fuel feed hose fitting onto the rail fitting. Route hoses towards the back of the intake manifold.



Final Notes- Check clearances around exhaust components, make sure there is no chaffing on sharp edges in the engine bay, and double check for leaks after starting up the vehicle.

Enjoy!