

# Sikky Fuel Filter Kit Install

## FFK-S14

Step 1- Remove the factory fuel filter. Keep the bolts to reuse.

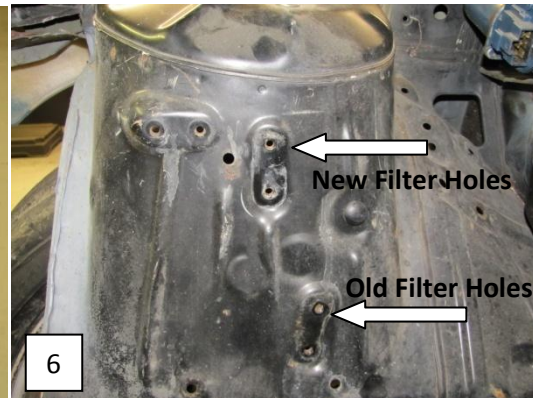


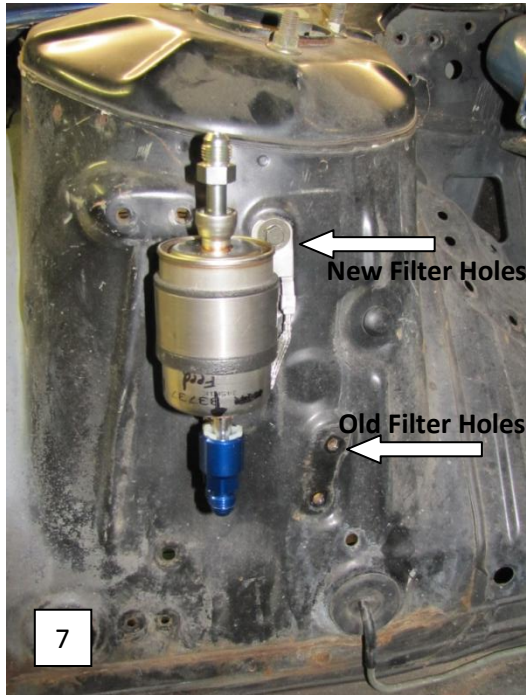
Step 2- Remove fuel hoses and lines back to the fuel tank. To gain access to the fuel pump go through the trunk. Remove the push pins and pull up the carpet.





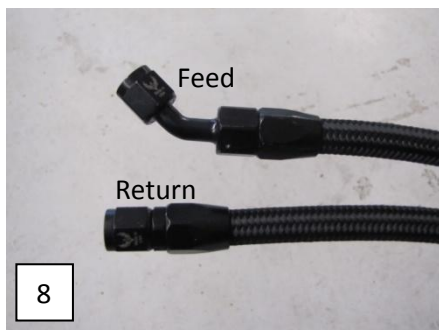
Step 3- Take supplied fuel filter with the original fuel filter bolts and reinstall. Use the upper hole location, not the same holes where the factory one was installed (Fig 6 &7).





The center line on the fuel filter is the return and the outer line is the feed.

Step 4- Now that the fuel filter is installed, route hoses to the fuel pump. Label the hoses before feeding them through. The hose with a 45degree fitting is the feed and the hose with a strait fitting is the return. Feed to feed, return to return! You'll want to run the hoses on the passenger side of the fuel tank, up next to the factory plastic clamp location (Fig 9 &10). Then pull lines up the fuel pump and tighten with the hose clamps (Fig 11). Inward arrow is feed, outward arrow is return.







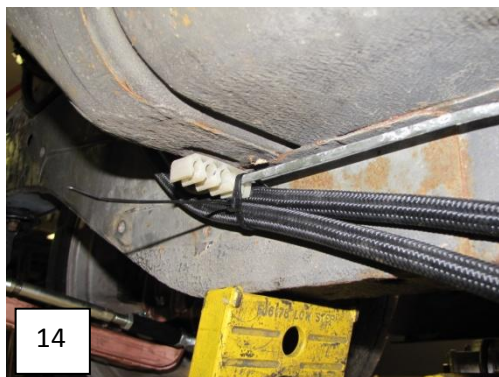
Step 5- Return to the front of the car and route the fuel lines under the factory hard lines. Make sure to leave slack in the hoses.



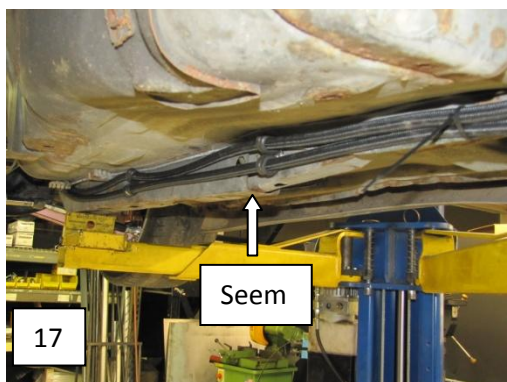
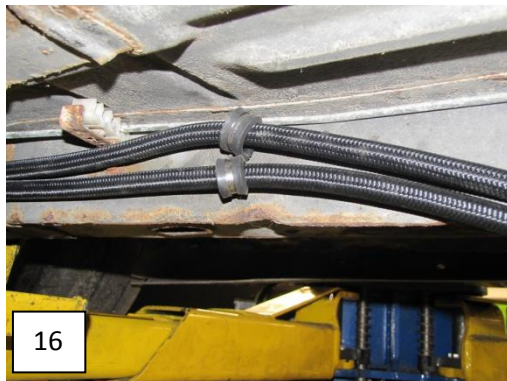
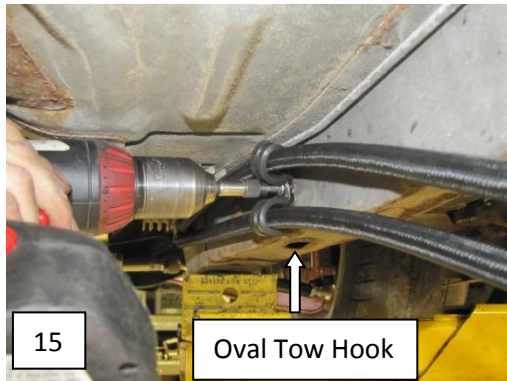
Step 6- Loosely start the fittings onto the fuel filter.



Step 7- Zip tie lines, at the front, to the factory hard lines as needed to remove slack.



Step 8- Take the cable clamps and install. Mount the first clamps on in a location in front of the oval tow hook. Mount the second ones just past the break in the frame rail seam. Bend the clamp tabs up for clearance.



Step 9- Zip tie back of the lines as needed.



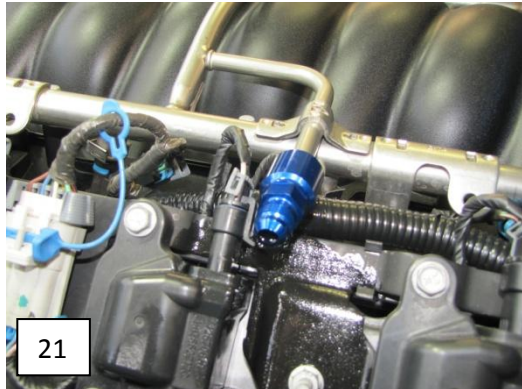
Step 10- Go to back to the front and tighten the fittings to the fuel filter. Do not over tighten AN fittings, they can be damaged very easily.



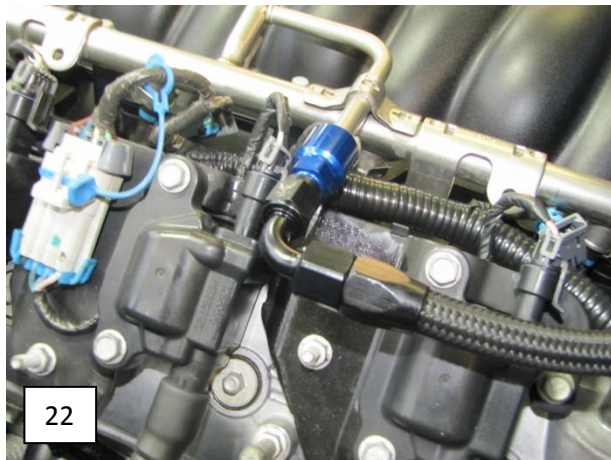
Step 11- Install the fuel rail feed hose to the fuel filter.



Step 12- Install the supplied clip on fitting onto the fuel rail.



Step 13- Install the 90degree fuel feed hose fitting onto the rail fitting. Route hoses towards the back of the intake manifold.



Final Notes- Check clearances around exhaust components, make sure there is no chaffing on sharp edges in the engine bay, and double check for leaks after starting up the vehicle.

Enjoy!